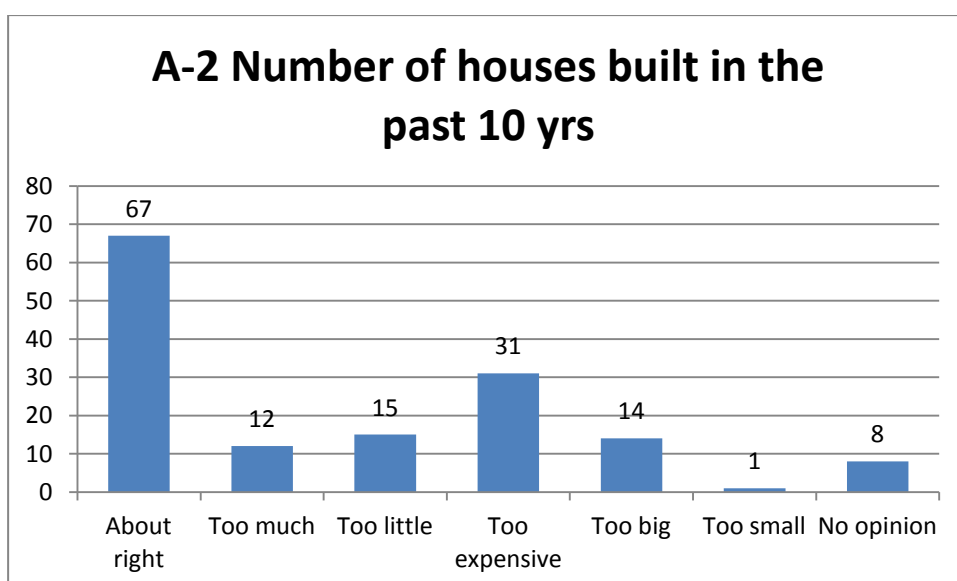
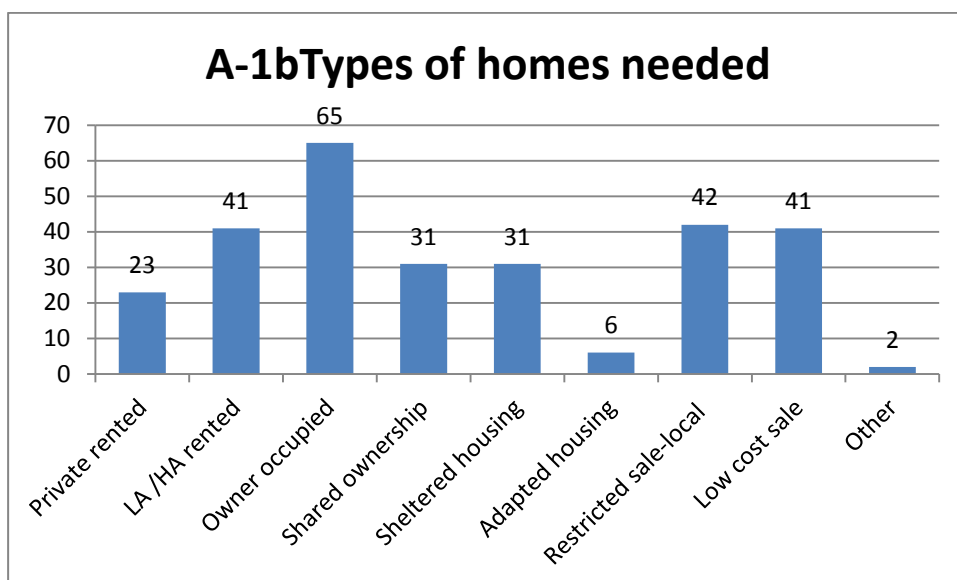
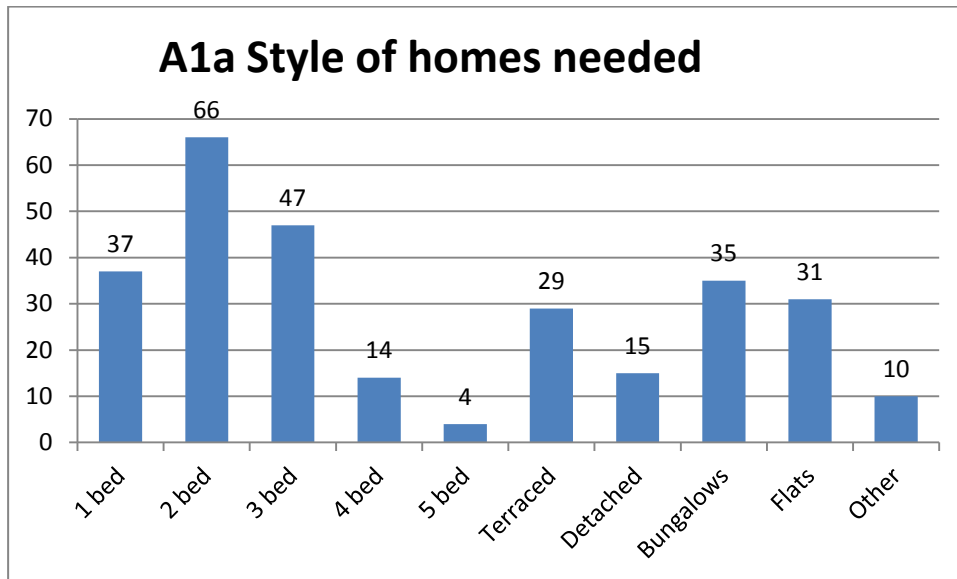
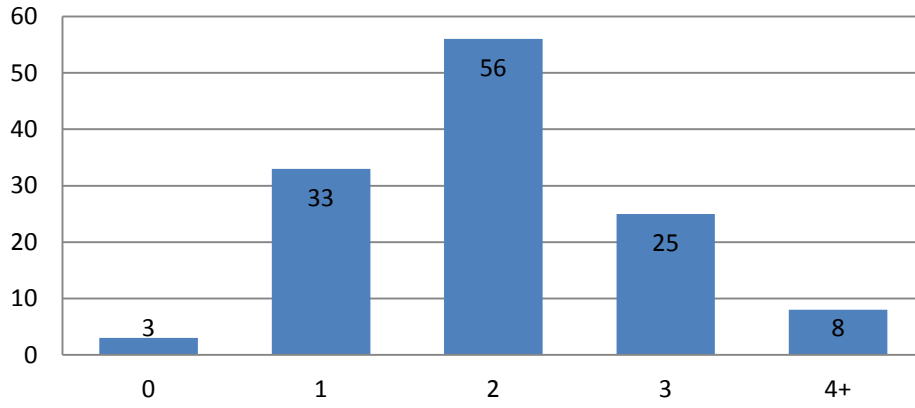


Snapshot of Responses to the Neighbourhood Plan Questionnaire

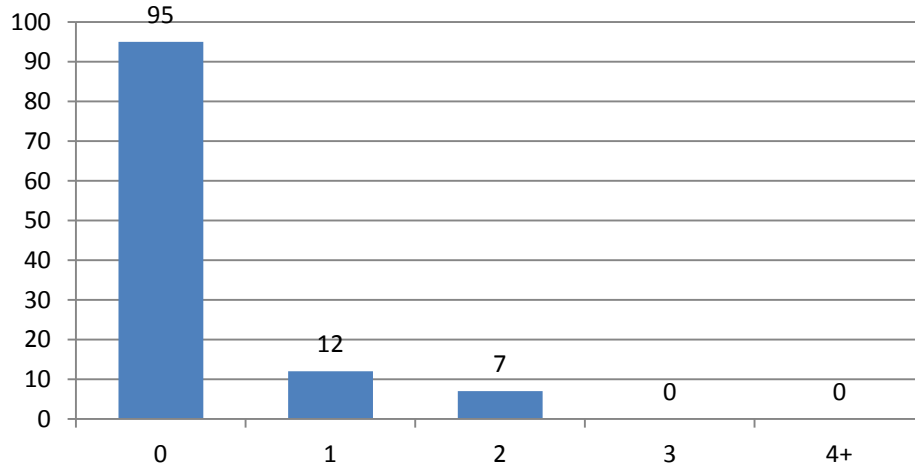
Please see below a summary of the main results in graph form. We have selected data that we feel is of the most interest at the present time. Analysis of all the data received will be published as an appendix to the finished Neighbourhood Plan in due course.



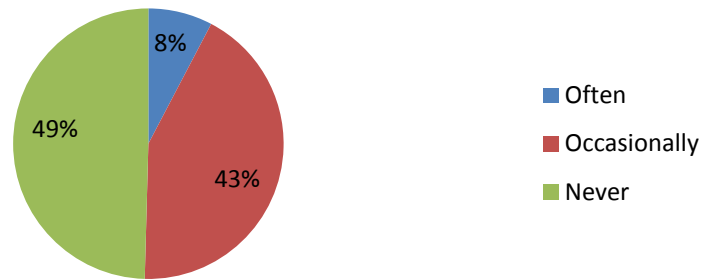
A-5 No. of road-worthy cars at property



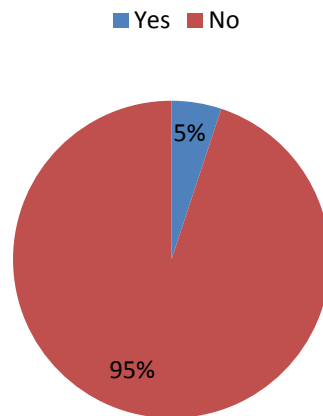
A-6 No. of cars parked on highway



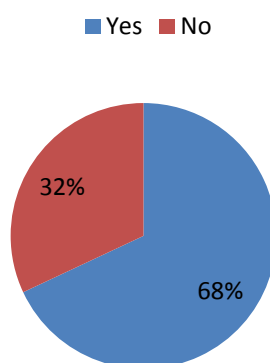
D-1 Frequency of transport problems getting out of parish to other places, linked to age range.



D-3 Trouble getting around parish?

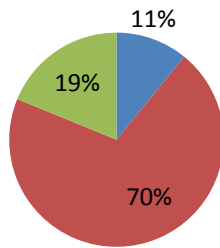


D-5 Are there adequate car parks in parish?



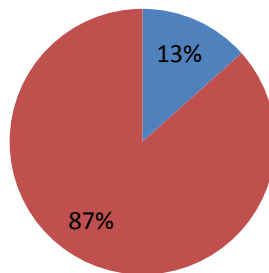
D-7 Pavements user-friendly for those with disability, pushchairs, or wheelchairs?

■ Good ■ Reasonable ■ No opinion



D-8 Has lack of public transport affected finding employment?

■ Yes ■ No



E-2a Reasons for shopping in the parish

